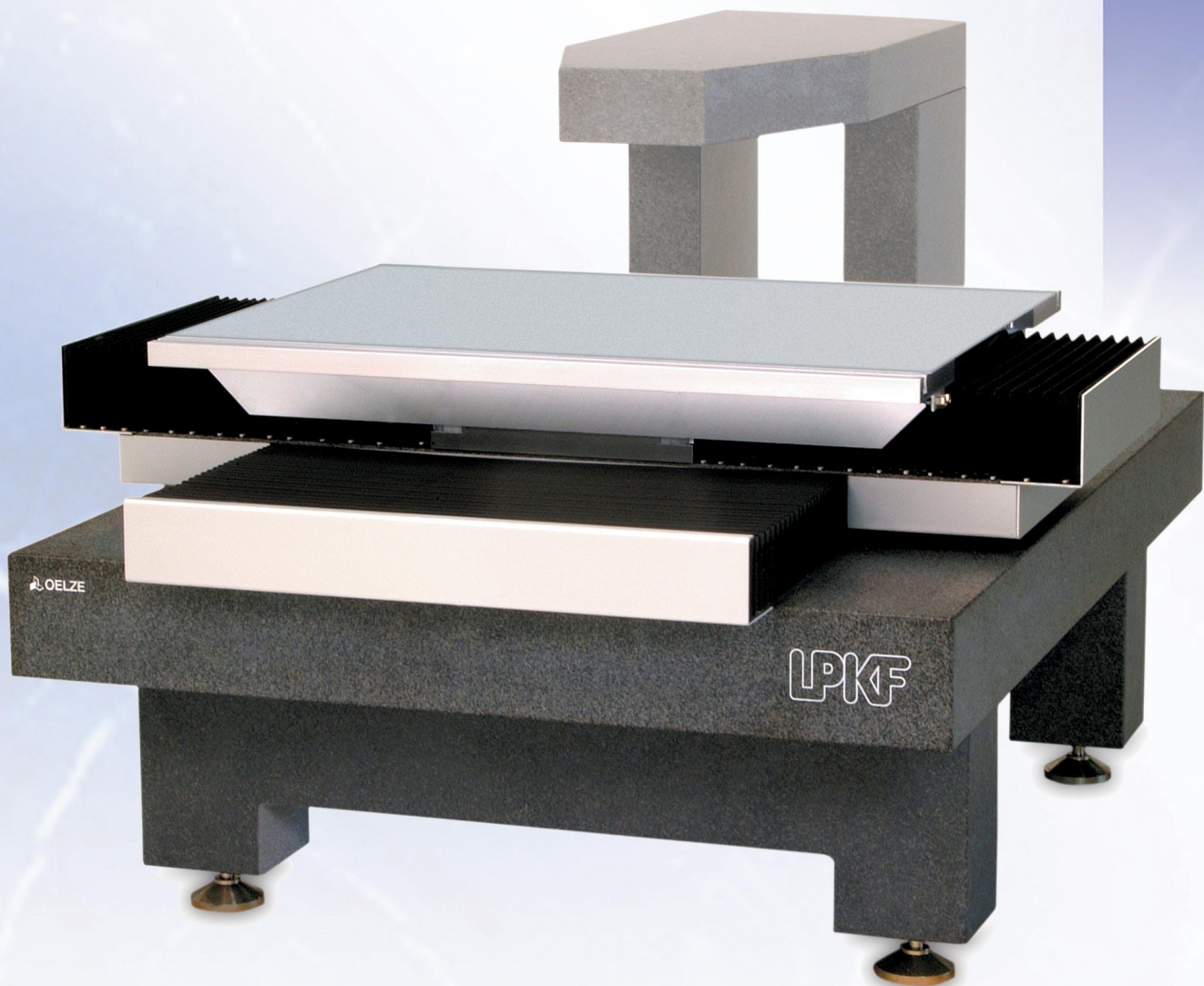


Cross Table XY 74/74 G

LPKF

Precision Drives

**Economic cross table with
precision guidance for micrometer-exact
positioning and tasks of movement**



Exact positioning on 740 x 740 mm



The LPKF XY 74/74 G is a precision positioning system with a monolithic granite sub-structure. The combination of newly developed compact guides and high-resolution measuring systems in this cross table enables it to be used for processing and checking of structures from the macro to the micro range. It cannot only reach precisely to a specific position but also follow predetermined movement paths with micrometer accuracy.

The cross-table comprises two linear axes one above the other, arranged at right angles. The guidance systems comprise compact profile rails with integrated ball chains. This means that the user benefits from a longer service life, high running quality and an extremely low level of vibrations. Additional advantages include long relubrication intervals and much quieter running.

DC servomotors and ball screws are used to drive the two axes. Pre-stressed spindle nuts are used in order to achieve high rigidity and minimal hysteresis.

For position measurement, each axis has a high-resolution open linear scale with an exact reference point.

The range of travel may also be set and monitored by the software.

Parameter	Data
Range of travel XY:	740 x 740 mm
Accuracy of the measuring system: at 20 ±0.5°:	± 3 µm
Maximum acceleration:	approx. 0,1 g
Maximum speed:	80 mm/sec
Repeating accuracy	< 1 µm
Space requirement LxWxH:	2.000 x 1.200 x 1.000 mm

LPKF-Products

Präzisionsantriebe / Precision Drives

Steuerungen / Control Systems / Software

Meßtechnik / Measuring Equipment

Sondersysteme / Special Systems

LPKF Motion & Control GmbH

Mittelbergstraße 17
98527 Suhl

fon: + 49 36 81 / 89 24-0

fax: + 49 36 81 / 89 24-44

mail: info@lpkf-mc.de

net: www.lpkf-mc.de