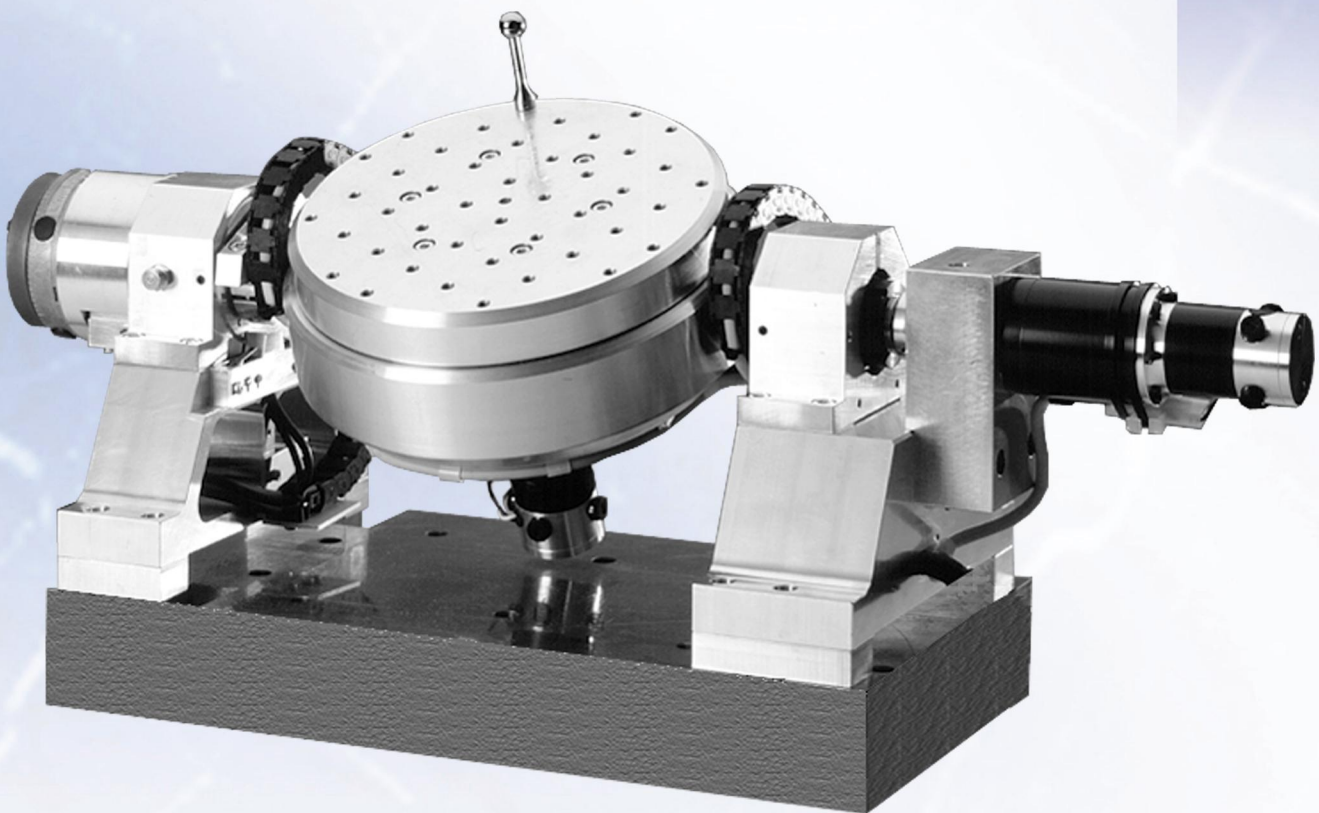


Rotating and Swivelling unit DSE200

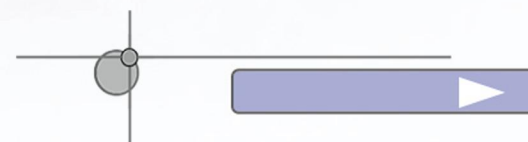
LPKF

Special systems

**Precision positioning system for treatment
and measurement of 3D objects**



Rotate and swivel 360° x 180°



Precision rotating and swivelling unit

The LPKF Rotating and Swivelling Unit DSE 200 can turn an object around the vertical axis with the greatest accuracy and at the same swivel round a horizontal axis. This makes it possible to observe or process all sides of an object from a single fixed position. The DSE 200 has a rotary table with a diameter of ca. 200 mm, which has a 25 mm grid of tapped holes (M6) for fixating the parts. Both axes are equipped with precision bearings. It is driven by DC servomotors. In order to achieve the highest accuracy, the angle encoder has a resolution of 1.8" (angular seconds) and is connected directly to the axes of rotation.

It is suitable for **applications** in plants in which objects are moved or scanned with high positional and repetitive accuracy, such as:

- Measuring devices for 3D inspection
- Micro-assembly and adjusting systems for optical or electronic elements
- Laser processing for 3D laser cutting, laser engraving
- Drilling table for the finest machining in 3 axes
- Production plants demanding high accuracy and throughput

Options

- Other sizes and holders
- Control by LPKF MotionSystem®
(e.g. synchronous operation of up to 6 axes)
- Integration into application-specific machine concepts
- Accessories and protective devices
- Test report

	φ axis	θ axis
Range of travel	360 °	180 °
Repeating accuracy	2 "	2 "
Positional accuracy	10 "	10 "
Resolution	1.8 "	1.8 "
Speed	15 rpm	15 rpm
Space requirement	690 x 240 mm	
Total weight without base plate	18 kg	

LPKF-Products

Präzisionsantriebe / Precision Drives

Steuerungen / Control Systems / Software

Meßtechnik / Measuring Equipment

Sondersysteme / Special Systems

LPKF Motion & Control GmbH

Mittelbergstraße 17
98527 Suhl

fon: + 49 36 81 / 89 24-0

fax: + 49 36 81 / 89 24-44

mail: info@lpkf-mc.de

net: www.lpkf-mc.de